

A photograph of an industrial facility, likely a refinery or chemical plant, featuring a complex network of large, silver-colored pipes and metal structures. The scene is captured from a low angle, looking up at the towering pipes and walkways. The lighting is somewhat dim, with a blueish tint, suggesting an overcast day or an indoor setting with artificial lighting. The pipes are arranged in various directions, some running horizontally and others vertically, creating a sense of depth and scale. The overall atmosphere is one of industrial strength and complexity.

WE DELIVER. ALL PRODUCTS, GRADES AND SERVICES.

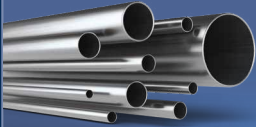
**WITTE TUBE. Your specialist for  
strong pipes.**

TUBE



[witte-tube.com](http://witte-tube.com)

# Our standards? Far beyond common:



## Pipes

DIN EN ISO 1127  
ASME B 36.19

### seamless:

EN 10216-5 TC1/TC2  
ASME/ASTM SA/A789 || 790  
|| 312

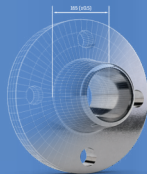
### welded:

EN 10217-7 TC1/TC2  
ASME/ASTM SA/A790 || 928  
|| 312 || 358



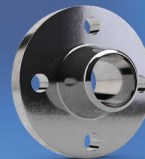
## Tees

EN 10253-4 A/B || EN 10253-3  
ASME B16.9 || ASME/ASTM  
SA/A 815 / 403  
acc. to drawing



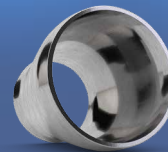
## Turned parts acc. to drawing

Certified according to PED  
and AD 2000-W0  
Welding bevel according to  
DIN 2559 F21/22 / ASME  
B16.25



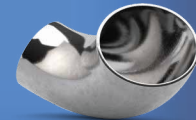
## Flanges

EN 1092-1 || ASME B16.5  
EN 1759-1  
acc. to drawing



## Reducers

concentric / eccentric  
EN 10253-4 A/B / EN 10253-3  
ASME B16.9 || ASME/ASTM  
SA/A 815 / 403  
acc. to drawing



## Elbows

seamless / welded:  
45° || 90° || 180°  
BA2 / SR || BA3 / LR || BA5  
EN 10253-4 A/B || EN 10253-3  
ASME B16.9 || ASME/ASTM  
SA/A 815 / 403  
acc. to drawing



## Our stock range

### Special stainless steels:

1.4462 || Duplex || S31803 || S32205 || F51

1.4410 || Super-Duplex || S32750 || F53

1.4539 || 904L || N08904

1.4547 || 254SMO || S31254 || F44

### Standard stainless steels:

1.4541 || 1.4878 || 321 || 321H

1.4571 || 316Ti

1.4404 || 1.4401 || 316L || 316

## Our supply range

further stainless steels

heat resistant stainless steels

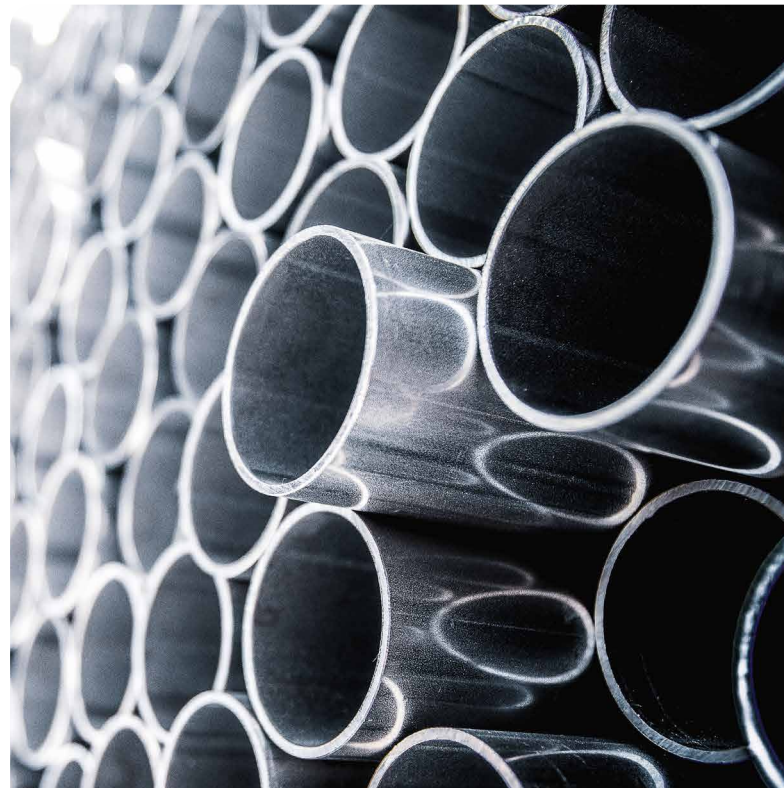
nickel-based alloys

carbon-steels and alloy steels

# WITTE TUBE. The Substance of Steel.

WITTE TUBE offers:

- 7 stock materials – from standard to special stainless steels – on more than 12.000m<sup>2</sup> of storage area
- about 60 supply materials
- nearly all common products – from a single source
- own machine shop for custom made parts and small series
- around 80 committed, flexible and highly qualified employees
- 50 years of experience



# The WITTE machine shop: customized solutions.

Even if a part is not in stock, it doesn't mean we can't deliver it. In our machine shop we modify flanges, fittings and bends – according to your wishes and specifications. In order to meet the steadily growing demands of the market, we are constantly expanding our machinery, training our employees and, of course, we are certified according to PED and AD 2000-WO.

**In addition to the machining of weld fittings and flanges, we also manufacture parts made from full bar material.**

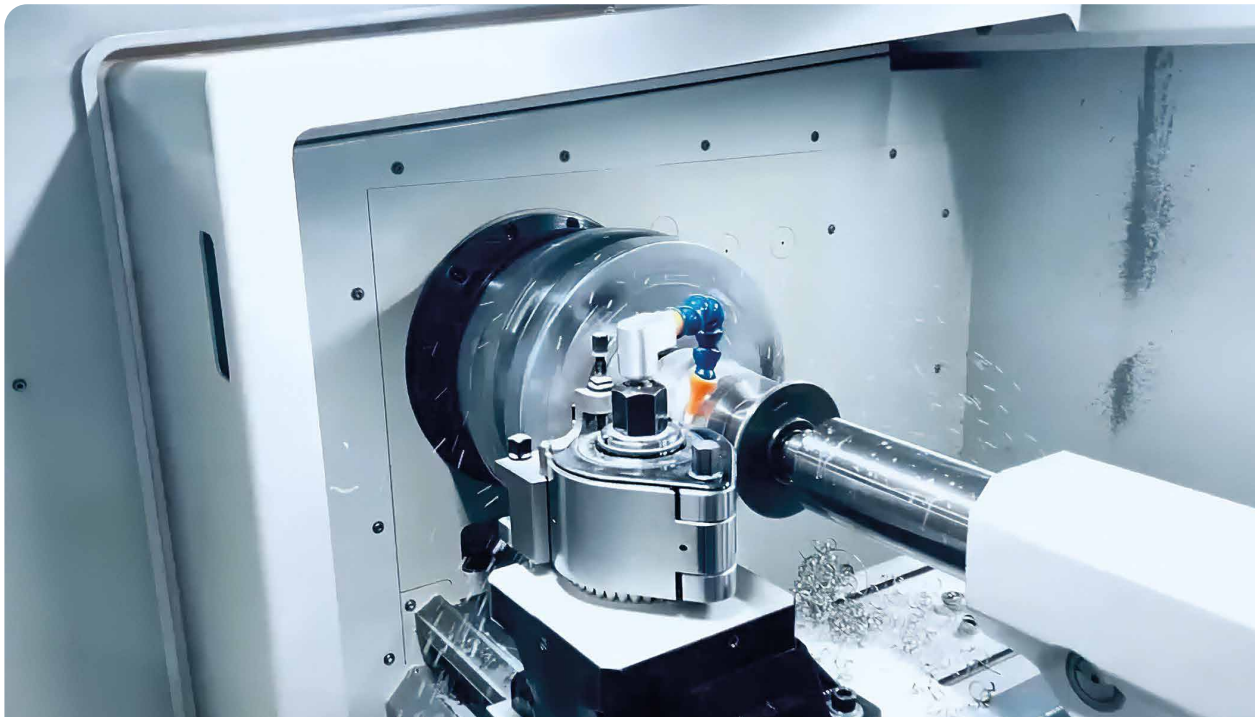
## **Machining:**

- turning of the connection dimensions (S) – from ½" to 24"
- cutting of pipe bends to any angle – from ½" to 24"
- surface treatment of flanges – Rz, Ra 0.5 to 160

## **Manufacturing:**

- concentric and eccentric reducers from ½" to 12"
- tees from ½" to 12"
- threaded parts (welding nipples, double nipples, sockets) from ½" to 4" – R, Rp, G, NPT, BSP/R, BSPT/Rp, BSPIIG
- hexagonal parts (such as hexagonal plugs, hexagonal double nipples) from ½" to 4"

**We manufacture individual parts and small series with a dimensional accuracy of 0.1 mm. Other parts as per drawing.**



# We are WITTE. The Steel Partners.

Three strong companies, one big goal:  
Your complete satisfaction.



**WITTE TUBE**  
The Substance of Steel.



**WITTE FLANGE**  
The Flange People.



**WITTE HiTEMP**  
The Heat is on.

## **WITTE TUBE + PIPE SYSTEMS GMBH**

Schafjückenweg 5  
26180 Rastede | Germany

Phone: +49 (0) 4402 9249-0  
E-Mail: [info@witte-tube.com](mailto:info@witte-tube.com)